

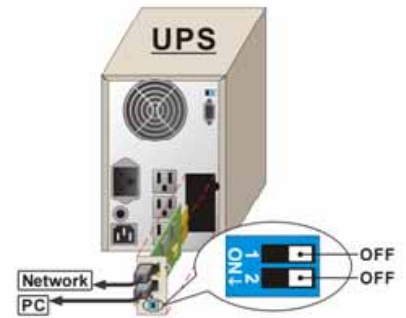
WebPower

~Quick Installation Guide~

5519.11031 Rev.E

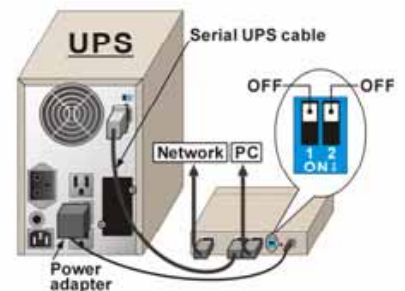
►WebPower Pro & mini USHA Hardware Installation:

1. Insert WebPower Pro Card or mini USHA into the slot provided by UPS.
2. Put the screws and tighten them.



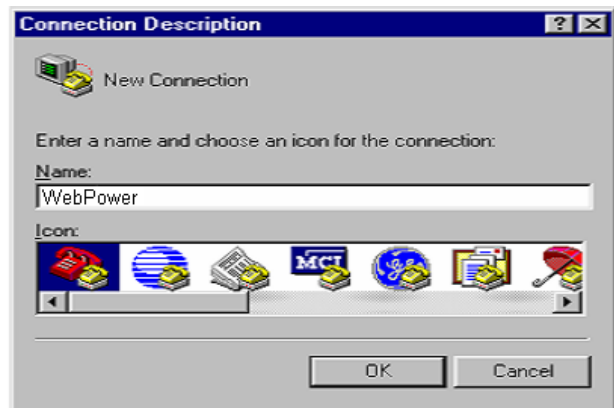
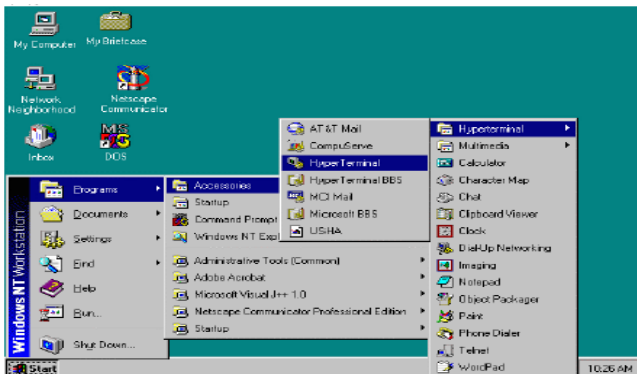
►WebPower ProE Hardware Installation:

1. Connect the serial UPS cable to the RS232 port of the UPS.
2. Plug the power adapter of WebPower to the power socket of the UPS.

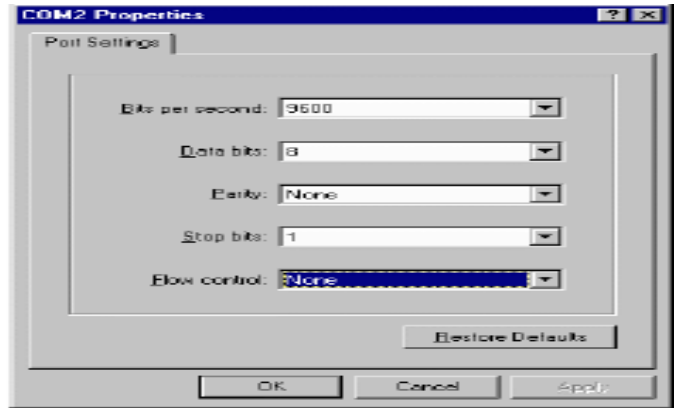
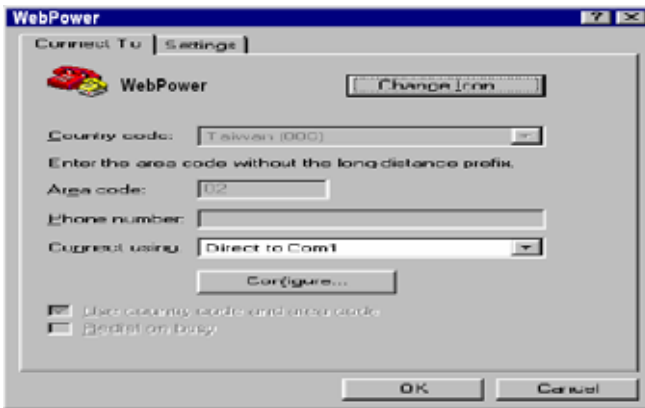


►Configuring WebPower via Serial Port

1. In Microsoft Windows (9x 、 Me、 NT4.0、 2000、 XP、 2003Windows) click Start -> Programs -> Accessories -> Hyper terminal.
2. Enter a name and press OK.



3. Select the correct COM port and click OK.
4. Configuring the port setting as 9600 bps、 8 data bits、 None (parity)、 1 Stop bit and None Flow Control. Then click OK.



5. Enter the default password “admin”, and the WebPower Configuration Menu will display on the screen.

```

=====
|                                     |
|      [ Webpower Configuration Utility Main menu ]      |
|                                     |
| Enter Password:                                     |
|                                     |
=====

```

6. Enter “1” and return twice to enter the System Group Menu.

```

=====
|                                     |
|      [ WebPower Configuration Utility Main menu ]      |
|                                     |
| 1. WebPower Configuration          |
| 2. UPS Parameters                  |
| 3. Access Control Table            |
| 4. Trap Receiver Table              |
| 5. Reset Configuration To Default   |
| 6. Restart WebPower                |
| 0. Exit                            |
|                                     |
| Please Enter Your Choice => 1      |
|                                     |
|-----|
|                                     |
|      [ WebPower Configuration Menu ]                    |
|-----|
| 1. System Group                    |
| 2. Control Group                   |
| 3. Parameter Group                 |
| 4. Email Group                     |
| 0. Return to previous menu         |
|                                     |
| Please Enter Your Choice => _      |
|                                     |
=====

```

7. Assign an IP address for WebPower and set the correct Subnet Mask; Gateway; Date and Time.

```

=====
|                                     |
|      [ System Group Configuration Menu ]                  |
|-----|
|                                     |
| WebPower Version : WebPower pro Card v4.28.b3 <SN 987654321000> |
| Ethernet address : 00 E0 D8 0B EC C5                       |
| 1. Ip Address       : 192.168.119.70                       |
| 2. Gateway Address  : 192.168.1.254                         |
| 3. Network Mask     : 255.255.0.0                         |
| 4. Date and Time    :                                     |
| 0. Return to previous menu                                     |
|                                     |
| Please Enter Your Choice => _      |
|                                     |
=====

```

8. Return to Previous menu and enter “2” to enter the Control Group. Enter “4” and set the

BOOTP/DHCP to “Disable”.

```

=====
|                                     |
|               [ Control Group Configuration Menu ]               |
|                                     |
| 1. HTTP Login Username      : WebPower                               |
| 2. Community Read-Only     : public                               |
| 3. Community Read/Write    : *                                   |
| 4. BOOTP/DHCP Control      : Enabled                             |
| 5. TFTP Upgrade Control    : Enabled                             |
| 6. PING Echo Control       : Enabled                             |
| 7. Telnet Control          :                                     |
| 8. HTTP Control            :                                     |
| 9. SNMP Control            :                                     |
| 0. Return to previous menu |
|                                     |
| Please Enter Your Choice => |
=====

```

Attention: If your Network environment is static IP address, please set DHCP as disabled and then restart WebPower. Connect RJ-45 cable when WebPower started.
If your Network environment is dynamic IP, only connect RJ-45 cable do not set IP Address and DHCP setting,

►Control WebPower/UPS via Web Browser

Start your Web Browser, enter the WebPower IP address in the Address text box, the WebPower Web page will be shown on the Browser.

1. UPS Control Setting

This page can set UPS shutdown delay and UPS sleep time. Turn off the UPS by manual way. Some of the items in this page just the administrator (ID:WebPower/Password:admin) can see and control them.

UPS shutdown delay time is count in seconds. The UPS shutdown delay time will be count-down synchronize to the shutdown delay time set in the Shutdown Program in all connected clients. The UPS shutdown delay time set in WebPower should always be greater than the shutdown delay time set in the Shutdown Program



2. UPS Shutdown Setting

This page lets you modify the parameters associated with the shutdown events.

1) AC Failed: Shutdown will occur when the AC input fails.

2) Battery Low: Shutdown will occur when the Battery low condition.

3) UPS Over Load: Shutdown occurs if the output of the UPS is overload.

4) UPS Over Temperature: Shutdown occurs if the internal temperature of the UPS is too high.

5) Weekly Schedule: This Shutdown occurs as per the timings given in the Weekly Schedule shutdown table.

6) Special Day: This Shutdown occurs as per the Day & Time mentioned in the Special Day shutdown table.

7) EMD Temperature over Threshold: Shutdown occurs when EMD temperature sensor detects over high or under low temperature.

8) EMD Alarm-1: Shutdown occurs when alarm-1 sensor detects an active alarm.

9) EMD Alarm-2: Shutdown occurs when alarm-2 sensor detects an active alarm.



The UPS should take proper action if that event occurs. Available actions are:

Disabled - action is disabled.

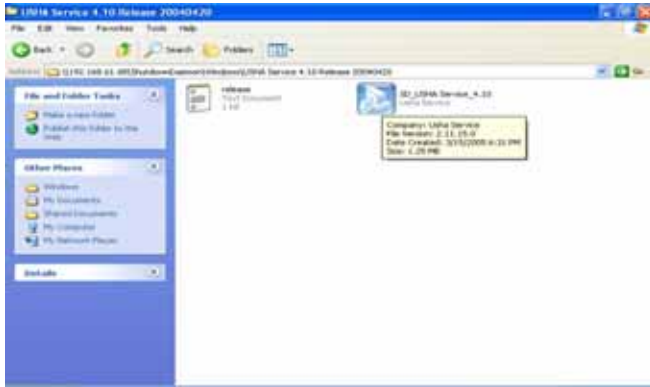
Warning - warning message will be broadcast to the connected clients.

Client Shutdown - warning message will be broadcast and shutdown command will be sent to the connected clients.

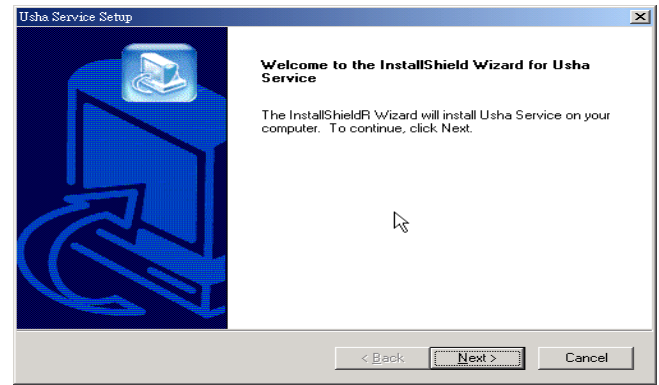
UPS Turn Off - warning message will be broadcast, shutdown command will be sent to the connected clients and UPS will be turned off.

► Windows Shutdown Software Setting

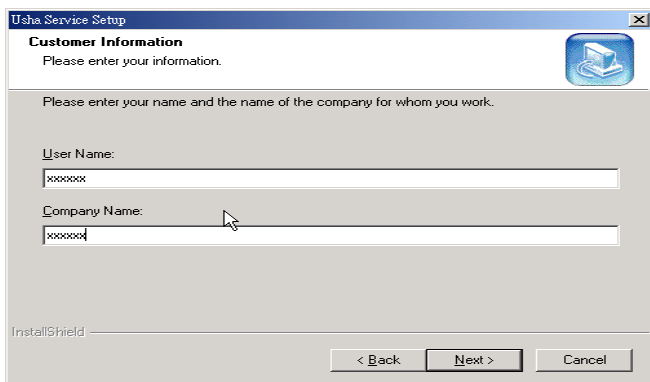
1. Double click "Setup" icon.



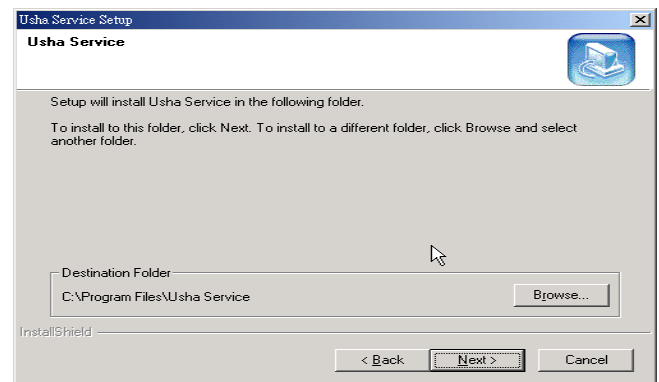
2. Display install software screen.



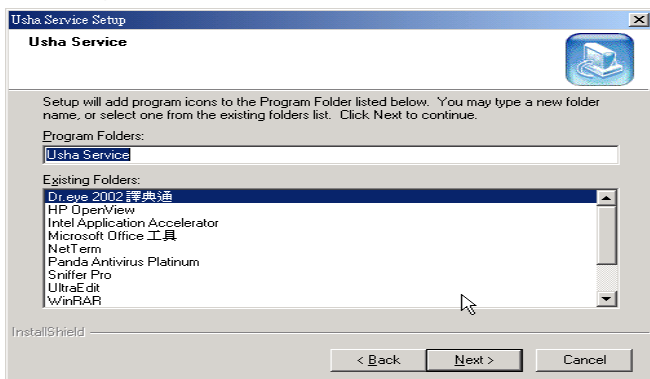
3. Enter user information.



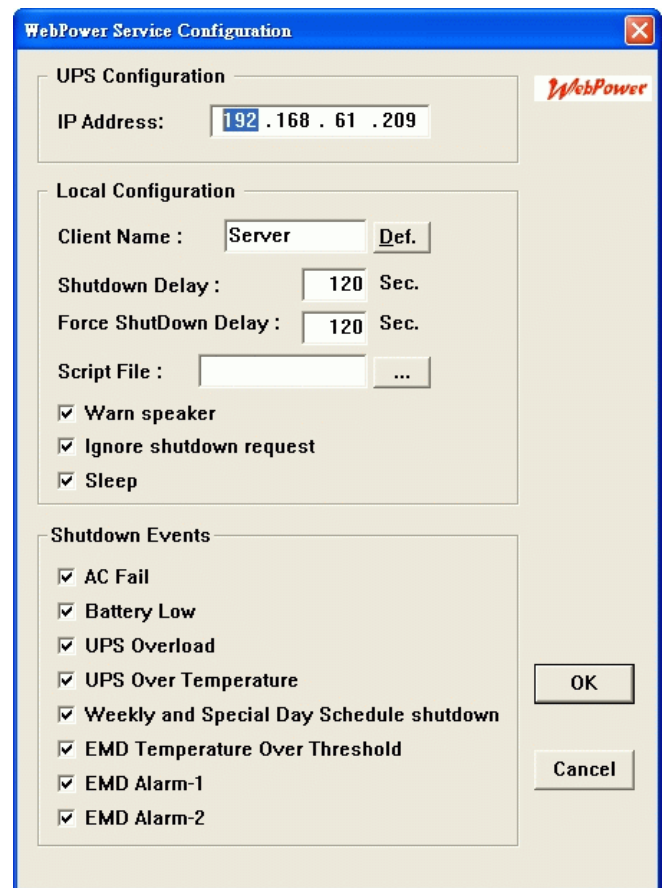
4. Set the installation folder.



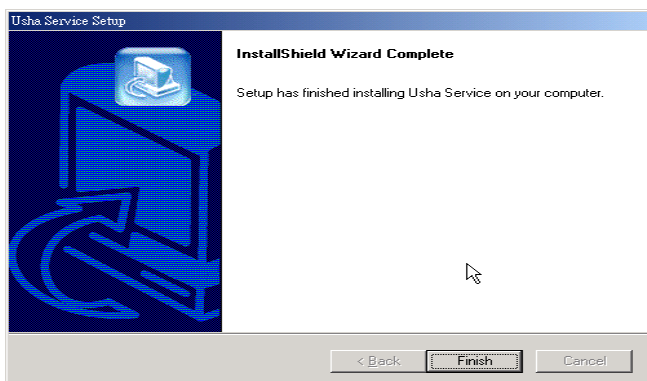
5. Enter a new folder name or select one existing folder.



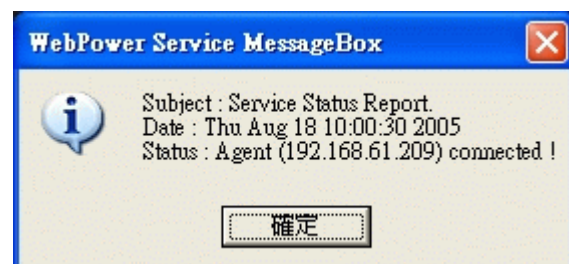
6. Setting UPS Configuration. Enter WebPower IP.



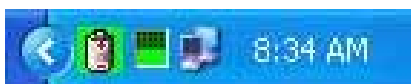
7. Click “Finish” and finish the installation.



8. Pop-up a message to inform connects to WebPower successfully.








9. The icon of shutdown software shows in system tray and works normally.



Attention: 1.The UPS shutdown delay time set in WebPower should always be greater than the shutdown delay time set in the Shutdown Program. 2. WebPower, Network connection device (HUB or switch) and Workstation (WebPower service) must connect to the UPS, or when AC failed, WebPower service can not receive the warning message and safe shutdown normally.

Five status of shutdown software:

1.  **Green:** UPS connection OK.
2.  **Blue:** Trying to locate UPS.
3.  **Red:** Shutdown software starts to cont-down and shutdown the client.
4.  **Green with crisscross:** The service is suspended.
5.  **Gray:** Remote UPS has shutdown.

►Linux/Unix-Like Shutdown Software Setting

1. Login Red Hat Linux release 7.3 Kernel 2.4.20-13.7 on an i686 Login: root Password: *****	;ClientName:The name of the this machine[optional]. ; ; Free form for this parameter. ; ; Maximum 28 bytes long. ClientName = Mainserver
2. Use “tar” command to extract the programs. [root@REDHAT-HJ USHA]# ls ug3_01beta1_redhat73_USHA.tar [root@REDHAT-HJ USHA] # tar xvf ug4_20B3_Linux_USHA.tar install.sh installtime uGuard unins.sh [root@REDHAT-HJ USHA] #	;WarningBeep status: WarningBeep = 0 ;1 = TRUE; 0 = FALSE(default) ;ShutdownDelay: The local delay time before shutdown. ; ; Range from 0 to 65536 seconds. ShutdownDelay = 120 ;Special shutdown script ShutdownScript = /usr/foo
3. Type “install.sh” to install shutdown software. [root@REDHAT-HJ USHA] # [root@REDHAT-HJ USHA] # ls install.sh installtime uGuard unins.sh [root@REDHAT-HJ USHA] # ./install.sh	;ForceShutdownDelay: The delay time for executing shutdown program ; ; Range from 0 to 65536 seconds. ForceShutdownDelay = 120 ;Check AC Fail event

<p>4. Configuration setting</p> <p>uGuard -- WEBPOWER Service, Formal Release 4.20 Copyright (C) 2005 Ingrasys Computer Inc. All rights reserved</p> <p>;Sample configuration file of uGuard ;RemoteHostIP: The IP address of remote UPS. ;Set the address to default IP (0.0.0.0) if no WEBPOWER Service is connected. RemoteHostIP = 0.0.0.0</p>	<pre>;1 = TRUE; 0 = FALSE(default) AcFail = 0 ;Check Battery Low event ;1 = TRUE; 0 = FALSE(default) BatteryLow = 0 ;Check UPS Overload event ;1 = TRUE; 0 = FALSE(default) UPSOverload = 0 ;Check UPS Over Temperature event ;1 = TRUE; 0 = FALSE(default) OverTemp = 0</pre>
<pre>;Special Weekly and Special Day Schedule shutdown ;1 = TRUE; 0 = FALSE(default) WeekDaySched = 0</pre>	<p>6. Display shutdown service starts information.</p> <p>uGuard WEBPOWER Service, Formal Release 4.20 Copyright © 2005 Ingrasys Computer Inc. All rights reserved</p>
<p>5. Type“:wq”to save the setting and exit.</p> <pre>:wq “/etc/uGuard.conf” 23L, 697C written Do you want to start the daemon now? [y] y</pre>	<p>uGuard is started.</p>

Please create the script file by yourself.

Attention:

1. The default value is in foo file under /user, if user wants to change script location that needs modify "ShutdownScript" parameters.
2. The Script must have executed right.
3. The UPS shutdown delay time set in WebPower should always be greater than the shutdown delay time set in the Shutdown Program.
4. Ensure the shutdown program have executed and root right.